

# NEW HOPE ART LEAGUE

*Inspiring, Encouraging and Empowering Artists*

New Hope Art League P.O. Box 751, New Hope, PA 18938 NHALPA@gmail.com  
www.NewHopeArtLeague.com

## January - March 2016 Issue

### Meeting & Workshop Schedule:

- Jan. 26** Meeting: Alan Fetterman  
lecture & demo  
"Living in an Artistic Lexicon"
- Feb.** No scheduled event
- Mar. 8** Meeting: Patrick Connors "The  
Chiaroscuro and the Ambiguity  
of Gloom"
- Mar. 12** Workshop with Patrick
- Apr. 5** Meeting: Georganna Lenssen  
lecture & demo "The Painterly  
Still Life"
- Apr. 9** Workshop with Georganna

## New Hope Art League 2016

**Directors: Bill Jersey, Nancy Markowich, Diane DeAngelis** You may contact your Board Members at the New Hope Art League Email address: [NHALPA@gmail.com](mailto:NHALPA@gmail.com), and don't forget to specify the person's name you wish to contact.

President: Donna Lovely  
Vice President: Diane DeAngelis  
Treasurer: Alice Lawler  
Assistant Treasurer: Flo Schadler  
Recording Secretary: Susan Van Atta  
Correspondence: Diane Greenberg  
Publicity: Donna Lovely  
Membership: Cindy Roesinger  
Newsletter: Laura Robinson  
Hospitality: Bob Allen  
Hanging: Pam Miller/ Christina Poruczynski  
NHAL Plein Air: Pia St. Onge  
Scholarship: Elizabeth M. Zack  
Facebook: Diane DeAngelis  
Show Chair: Diane DeAngelis  
Gallery Sitting: Jeanette Gonzales

## A Message From Our President

Dear Members:

Happy new year! May 2016 be wonderful and creative for you.

We have an exciting year planned for ourselves, with a slate of interesting speakers, NHAL sponsored workshops and art related field trips. Read about some of them in this newsletter, on our website and keep an eye on the emails for details. Please note that our meeting dates are not always going to be the last Tuesday of the month.

Thank you to our outgoing VP Ilene Rubin , Recording Secretary Helen Myers and Hospitality Chair Lois Clarkson. Welcome and thanks to VP Diane DeAngelis, Recording Secretary Susan Van Atta and Hospitality Chair Bob Allen. As always, thanks to those who volunteered to stay on in their positions (listed in the box on the left). Without our wonderful volunteers our League would not thrive as it does.

Please help us out by renewing your membership as soon as possible via the website or sending a check to P.O. Box 751, New Hope 18938. Starting membership level is only \$30.

See you Jan. 26 our meeting with Alan Fetterman.

Cheers, Donna [Nhalpa@gmail.com](mailto:Nhalpa@gmail.com)

## New Hope Art League Meeting & Event Details:

**The New Hope Art League Juried Show Prospectus** can be found online, starting on March 8th at [www.newhopeartleague.com](http://www.newhopeartleague.com) and the show entry deadline will be April 27th at 6 PM.

### NHAL TRIP

Wednesday, April 6, 2016. "The MET in NY", highlighting the show, Elizabeth Louise Vigée Le Brun, 1755-1842. As April 6 approaches, you will be provided with more details.

### Tentative Tour

The Barnes Museum with Georganna Lenssen, the guest artist at our NHAL April meeting may occur in late April or early May.

Thanks to **Nancy Markowich** for organizing a docent tour on Friday, November 20 at the Princeton University Art Museum and a lunch afterwards.

Our holiday party was a good time! A BIG thank you to **Pearl and Chuck Mintzer** for being wonderful hosts on December 10th. The art swap was a treat for those who participated.



Donna Lovely and Bill Jersey, pictured. (Donna with Bill's painting from the art swap)

On Jan. 15 the NHAL sponsored a tour (thanks to Diane DeAngelis for organizing it) lead by Patrick Connors at the Philadelphia Museum of Art. He gave a fascinating and engaging tour about chiaroscuro and the ambiguity of gloom as it pertains to several 17th century Dutch painters. Patrick said it was a pleasure to see familiar faces and to meet new ones, too. The tour's theme will be expanded upon at the March 8 meeting with Patrick presenting on the same topic. Don't miss it



photo by Donna Lovely

A few of the artists that speak at our meetings are offering workshops to follow up their lecture topics. The workshops will be held at St. Martin of Tours, in the school building, 1 Riverside Circle, New Hope.

**NHAL will pick up the first \$500 of the workshops; any further cost will be passed to the participants. We do not expect this to be above \$50. There will be a \$25 reservation fee which will then be applied to any further costs.**

Each month we will send out a "sign up" notice for the workshops. There is an eight person minimum to open the workshops. If the response is positive we will add another date. *The artists websites are listed so please explore their works and course materials so you can "save the date" if you are interested in attending.*

We are very excited about our featured artist series. We hope you get involved and enjoy the programs.

**Sad News:** Our member, **Chaz Walter**, died peacefully and comfortably on New Year's Eve after being in hospice since Thanksgiving. Our heartfelt condolences go to his wife, Peggy.

## MEMBER NEWS:

**Ilene Rubin** will be showing in January at Forever in Frames on York Rd, Hatboro, The Artists' Corner in the Bucks County Antiques Center in Chalfont on Rt.202, Northampton Library, Clinton NJ Hatboro Bank, Warminster

In February showing in Show Some HeArt Forever In Frames, The Artists' Corner, Hatboro Bank and the Bank of Princeton in Lambertville



*"Afternoon Sugar Rush"* oil by Ilene Rubin

**Christina Poruczynski** has two photographs currently on display Jan.11 through Feb.19 in the juried show, "Somerset Cultural and Heritage Gallery Art Show" at the County Admin. Bldg. at 20 Grove Street in Somerville, NJ.

Also, a plein air painting will be on display in the juried "Gallery U Boutique Gallery Show", Westfield, NJ, from Feb 6 - 29, 2016.



*"Holecolm-Jaminson Farmstead"*  
Oil on Panel by Christina Poruczynski

**Joe Danciger** is the subject of an article by noted art critic, Donald Kuspit. Please read "Beginning Nature Again: Joe Danciger's Landscape Paintings" in the Winter 2015, Issue 38 of Percontra Magazine, in which "Sycamore on the Towpath" is discussed

<http://percontra.net/issue/winter-2015/nonfiction/beginning-nature-again-joe-dancigers-landscape-paintings/>



Joe Danciger's *"Sycamore on the Towpath"*

**Stephanie Lisle** - Promotion for the Arts and The Pennsylvania Center for Photography are hosting AMERICANA, a juried photographic journey of the country, its people, and its culture.

Photographers from 3 countries and 22 states in the U.S. have entered their interpretations of the theme AMERICANA. The exhibition is comprised of a traditional print exhibit as well as a high resolution digital screen display. Additionally, through the Camera Club Challenge, we welcome our winner The Princeton Photography Club who will be displaying their members' work in a designated exhibition room. This exhibit is open to the public and free discussions and special presentations are scheduled throughout the exhibition. Please check the website for details at [www.pacenterforphotography.org](http://www.pacenterforphotography.org)

If a group of the New Hope Art League would like to schedule a free and private group visit of the exhibition, please contact Stephanie Lisle at [info@stephanielisle.com](mailto:info@stephanielisle.com)



**"Some Day All This Will Be Mine"** by Bill Jersey

**Donna Lovely** presents *Frozen in Time: The Photography of Donna Lovely*, a solo show of 15 B&W photos at Lambertville Hall, 57 Bridge St., Lambertville, includes "Foggy Train Tracks" and has been extended until Jan. 31. A closing week reception is Thurs., Jan. 28 from 4- 7pm.

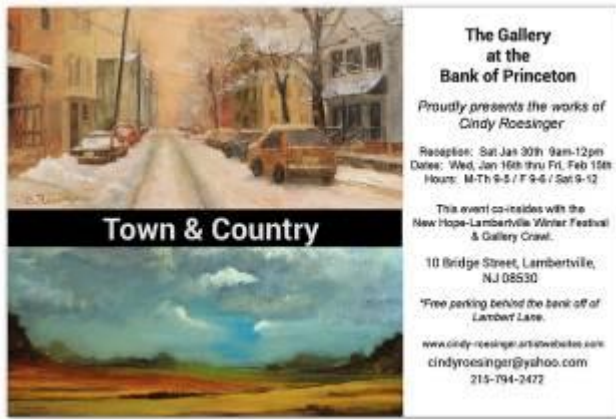
Donna's photo, "Oviedo 'Gleaners' ", has been accepted in the Americana show at the PA Center for Photography, 181 E. Court St., Doylestown. Show runs Jan 29 -Feb. 21, open Thursdays and Sundays 11-3, Fridays 4-8, and Saturdays 12-5.

Donna will have 2 photos in the "Show Some HeART" show at The Gallery at Lower Bucks Feb. 1 - Mar. 5, 1304 Veterans Highway, Bristol, PA and she will also have a photo in the Artsbridge Members' Show, Feb. 6 - 28, in the Prallsville Mill, in Stockton, NJ.



**"Foggy Train Tracks"** photo by Donna Lovely

**Cindy Roesinger** is in the Lambertville Gallery at the Bank of Princeton presents "Town & Country", an exhibition of oil paintings by Cindy Roesinger. The show runs from Sat, Jan.16th through Sat, Feb.13th. This show coincides with the Lambertville-New Hope Winter Festival and Gallery Crawl. The gallery is located in the heart of Lambertville at 10 Bridge Street, Lambertville, NJ 08530. Gallery hrs: Sat 9-12, M-Th 9-5, Fri 9-6. **Reception Sat., Jan. 30 from 9am-12pm**



Artist **Susan A. Esbensen** had two pieces selected for The Center for Contemporary Art Members' Juried Exhibition at Gallery W in Bernardsville. Juror Heather Cammarata-Seale selected "The Myth: The Illusion of Separation" and "The Seeker II." The exhibition received over 160 entries from 61 members. In the end 29 pieces were selected for the exhibition which runs from Jan.22- Feb.27 in Bedminster, NJ.



**"The Myth The Illusion of Separation"**  
by Susan Esbensen

From March 5 - May 1, 2016, **Nancy Lloyd Fine Art** will display paintings on leaves, by the juvenile life-without-parole prisoner/artist **Ken Sanford**. The leaves are collected from the prison yard where Ken is incarcerated. The opening reception will be March 5, 7 pm to 10 pm. Cindy Sanford, adoptive mother, will be at the gallery March 26 beginning at 7 pm to discuss how her relationship began and developed with Ken Sanford. She will also discuss the issues confronting juvenile life-without-parole prisoners, their families, their victims and the impact on society. Cindy, in conjunction with Ken, has written a book, "Letters to a Lifer", exploring these issues. She is campaigning to have juvenile offenders, who have been given life-without-parole sentences, be given the chance to have their sentences reviewed and potentially reduced. Nancy Lloyd Fine Art is located at 1695 Aquetong Road, New Hope. If you have any questions, please contact Nancy Lloyd at [nmlloyd@yahoo.com](mailto:nmlloyd@yahoo.com) or **215-693-1354**.



**"New Life Fawn"** by Ken Sanford

Roy Reinard will be showing at Tubby Olive in Doylestown from February through April. He will be exhibiting a collection of local Bucks County landscapes. Roy will be joining Kit Dalton in this landscape show.



Roy Reinard's landscape

Lynda Evans announces her Studio Cleaning Out Sale - January 30 & 31, 10 am - 4 pm., 6684 Phillips Mill Road, Solebury, PA. Come early for the best selection of new and nearly new frames, new painting surfaces, paints, papers, easels, and whatever else I unearth between now and then. I'm sure there will be surprises. This sale will be advertised to the public in February so come and get the first pick while you can. Snow date is the following weekend, Feb. 6 & 7.

[www.LyndaEvansArt.com](http://www.LyndaEvansArt.com)

Nancy Shill announces "Classical to Modern Show". Do not miss the opening. See Nancy's latest works in oil at Trisha Vergis Gallery, 287 S. Main St, Lambertville, NJ.



"Cantaloupe Slices" by Trisha Vergis Oil on Canvas 10" x 10"

Trisha Vergis

Jim Lukens Susan Levine  
Kay King Richard Hoffman  
Rhonda Garland Liz Weiler  
Nancy Shill Gerald Simcoe

Classical to Modern Show  
Opening Reception  
Saturday  
February 13, 3-8:00  
Plenty of Parking

gallery hours 1-6, Thursday-Sunday  
[www.trishavergisgallery.com](http://www.trishavergisgallery.com)  
609 460-4710

Cornerstone Clubs presents a **Pop Up Haiti Exhibit**. Your family friendly visit will engage you physically and emotionally in meaningful and relevant community building activities. It will challenge you to explore the motivation behind your own drive and determination to succeed. Admission \$10

Sunday, April 24 from 1-4 PM  
*Eagle Fire Company*, 46 N. Sagan Road, New Hope, PA 18938  
Visit - [www.allurewest.com/haiti](http://www.allurewest.com/haiti) to register.

## ARTIST OPPORTUNITIES:

Show Some HeART registration closes this Monday, January 25. It's a quick email to [Christine.Tompkins@bucks.edu](mailto:Christine.Tompkins@bucks.edu) at The Gallery at Lower Bucks Campus telling them what artwork you are submitting this Thursday between 3-7pm.

All artwork to be priced at \$125 (\$25 as sale price to BCCC Scholarship Fund), \$10 entry fee for 2 pieces, drop off is Thurs., Jan.28 from 3-7PM, the art show opening is Feb.5 from 6-8:30 and the pickup is Mon., March 7 from 3-7 PM

=====

Several of our members are in the inaugural juried show "**Americana A Photographic Journey of the Country, Its People, and Culture**" at the PA Center for Photography. The opening reception is next Friday, Jan. 29 from 6-8pm at 181 E. Court St., Doylestown. The show is open through Feb. 21 and the gallery hours are Thurs.-Sun.11 AM-3 PM, Fri.4-8 PM, Sat.,12-5 PM, and by appointment.

This Juried exhibition is presented and hosted by Stephanie Lisle as a Promotion for the Arts and The Pennsylvania Center for Photography at 181 East Court Street, Doylestown, PA

The opening reception is hosted by New Hope Photo ([NewHopePhoto.com](http://NewHopePhoto.com))

For more information: [www.stephanielisle.com](http://www.stephanielisle.com), 215-989-2630, [pacenterforphotography.org](http://pacenterforphotography.org), [pcp.exhibitions@gmail.com](mailto:pcp.exhibitions@gmail.com)

=====

**Bucks County Audubon Society** will have an **Earth Day Festival** on April 16 from 10am-4pm. (The rain date is Sun.April 17th, 10am-4pm.)

We are looking for persons who create and sell things made from reused and recycled materials. If anyone needs more information, They can contact Marissa Farra ([mfarra@bcas.org](mailto:mfarra@bcas.org)) or me ([pantrobust@bcas.org](mailto:pantrobust@bcas.org)), visit [www.BCAS.org](http://www.BCAS.org) or call 215-297-5880

There is no table fee. Tables and chairs will be provided but bring your own canopy, if desired. If you would like to sell mission related products at your table, we ask that 25% of the proceeds be donated to Bucks County Audubon Society.

For presentations, lectures and demos, the Audubon Society can schedule a special time for you during the day.

**"Art of the Barn Tour and Show" to benefit the Bucks County Audubon Society**

You are cordially invited to be an exhibitor at the 17<sup>th</sup> annual Art of the Barn Tour and Show sponsored by and to benefit the Bucks County Audubon Society on July 9 and 10, 2016. Last year's event was a great success and most participating artists sold well. Details:

- (1) Entry fee is \$150.00
- (2) Bucks County Audubon Society will also collect a commission of 25% on all artists' sales.
- (3) There will be 2 – 3 artists displaying at each of the historic barns on the tour. Each barn will be managed by a barn captain who will be responsible for managing the exhibits and personnel at the barn to which you are assigned. If you are accepted as an exhibitor you will be informed as soon as possible of your barn assignment and given contact information for your barn captain to confirm the site for your display, etc.
- (4) Artists are expected to provide canopies, display racks, supplemental lighting (if required) and other furnishings needed for their displays. Artists are expected to be on site with their display throughout the event and to clean up and remove any trash that may accumulate at their site. Please bear in mind that we are the guests on the barn owners and they can expect that we will respect their property.
- (5) BCAS will supply posters and postcards to the artists that they may, respectively, post wherever they believe potential clients may see them or mail to prospective or repeat clients. To facilitate production of these media and other publicity materials distributed by BCAS, each artist is requested to supply two digital images (minimum of 72 dpi jpegs e-mailed to mfarra@bcas.org) of their artwork that may be incorporated in publicizing the Barn Tour.
- (6) This is an invitational show. Artists wishing to participate will be accepted on a first-come basis and will be notified of their acceptance into the show in a timely manner. Please complete the attached form and mail it, together with your entry fee (in the form of a check made out to Bucks County Audubon Society), to:

John C. Mertz  
P.O. Box 147  
Pipersville, PA 18947-0147

**Key Dates:**

- (1) Set up of your display will take place on Friday, July 8, 9:00AM through 5:00PM; details about set-up day will be made available to you by your barn's barn captain.
- (2) Again, the event runs Saturday, July 9, from 9:30AM through 4:30PM and Sunday, July 10, from 12:00PM to 4:00PM and the artist or his/her representative is expected to be on site from 30 minutes before opening through the length of each day of the show.
- (7) BCAS assists artists with sales payments during the two-day show. BCAS charges state sales tax on artwork sold during the Tour. The details of how transactions are handled will be reviewed with artists prior to the Tour at a gathering of all participants a few months before the Tour.

**PARTICIPANT APPLICATION (next page)**

**PARTICIPANT APPLICATION**

**17<sup>th</sup> Annual Art of the Barn Tour and Show sponsored by and benefiting the  
Bucks County Audubon Society, July 9 and 10 2016**



**Both 2D and 3D artists may participate in this event. We are especially interested in artwork that reflects a “country living” theme. Original works created by the displayer as well as reproductions of such work may be offered for sale. Please fill out the following form and send it, along with the \$150.00 application fee, to: John C. Mertz, P.O. Box 147, Pipersville, PA 18947.**

Name: \_\_\_\_\_

Business Name (if different from above): \_\_\_\_\_

Address: \_\_\_\_\_

City/State/Zip: \_\_\_\_\_

E-mail address: \_\_\_\_\_

Contact phone number(s): \_\_\_\_\_

Website: \_\_\_\_\_

Please provide a brief description of your work, including price range:

I understand that by signing below I indicate my agreement with the terms and conditions described above and on the previous page. I further agree that the Bucks County Audubon Society will not be held responsible for any accident or injury that I or my property may sustain as a result of my participation in the 2016 Art in the Barn Tour. I further waive my right to any claim, lawsuit, or cause of action of any kind against the Bucks County Audubon Society or its agents. I further agree to assume sole, exclusive and personal liability for any damage, loss or injury that I may cause to any person(s) or property during my participation in the 2016 Art in the Barn Tour.

\_\_\_\_\_

(signature)

(date)

Finally, please sign below to agree with the following statement: I agree to allow the Bucks County Audubon Society to use two digital images of my work that I have submitted to be utilizing in marketing the 2016 Art of the Barn Tour and Show.

\_\_\_\_\_

(signature)

(date)

\_\_\_\_\_

# Call for Artists & Photographers Exhibition

## *American Pie: Pop Culture of the 50s and 60s*

Centre for the Arts 308 Mill Street Historic Bristol Borough

Opening Reception Thursday, February 18



**Original submissions in any medium welcome.**

**Theme:** Think portraits of iconic figures (pop, political, sports) Bandstand, Andy Warhol knockoffs, advertising for soda, cigarettes, cars, hair tonic, jitterbug, fashion, classic movies, civil rights, war, Brando, James Dean and other "bad boys," Monroe, IKE, JFK, LBJ...

An entrance fee of \$15.00 entitles the artist to display two original pieces. Submissions must satisfy the theme and be accompanied by a 2" X 3.5" typed card indicating the artist/photographer, medium and price. All pieces **MUST** be wired for hanging. Items may not exceed 25 pounds or be larger than four square feet. Inquire about special request options. **Artists keep 95% of their sale proceeds.**

Gallery visitors are invited to cast a "People's Choice Ballot" for Best in Show.

**Registration deadline is February 11.**

Register early. We are limited to 40 artists.

**Art Drop off: Wednesday, February 17- 1:00 to 6:00 pm**

**Opening Reception: Thursday, February 18 - 7:00 to 8:30**

**Exhibit Closes March 10.**

**Art pick up Friday, March 11 from noon to 6:00.**

Organizers reserve the right to refuse any work deemed inappropriate. It is required that all framed art work be **wired** and self insured. By their signature, artists exempt the Centre and Pocket Square Productions and their affiliates from all liability with regard to the transportation, storage or display of their works.

Register at Centre for the Arts from noon to 6:00 M-W-Th-Fri-Sat or mail check payable to

Pocket Square Productions c/o Centre for the Arts American Pie Exhibit PO Box 2126 Bristol PA 19007

Name \_\_\_\_\_ Signature \_\_\_\_\_

e-mail address \_\_\_\_\_  
(print clearly!)

Phone \_\_\_\_\_

Contact Bill Pezza at [bpezza@comcast.net](mailto:bpezza@comcast.net) for additional information.



Information for artists from our fellow NHAL member, **Pearl Mintzer,**

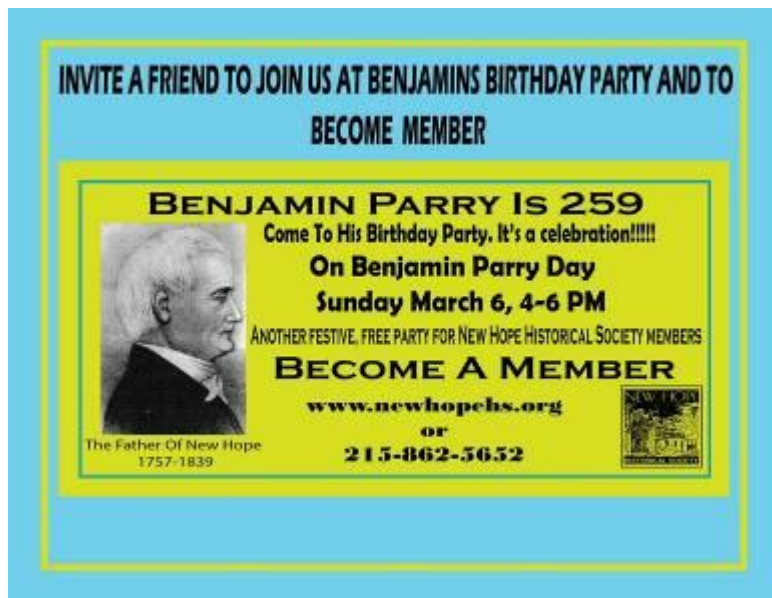
Hi,

One of the ways I have been able to market my art is through the organizations I belong to. The mistake most artists make is to belong to only artists groups. The New Hope Historical Society has lots of people who can afford to buy art and love it. Many of the movers and shakers in both New Hope and Solebury belong. You can network with them at the many events they have.

Many are free. I am the new membership chair and am inviting you to their next event. you can join by going online <http://www.newhopehs.org/join-donate.html>

or fill out the enclosed PDF and either bring to the party or return by mail. It costs \$35. Very little for all the parties and excellent networking opportunities you will get.

Best regards, Pearl



=====

Covered Bridges of Bucks County, Deadline: May 15, 2016  
Rich Timmons Studio & Gallery, The Rich Timmons Studio & Gallery - 3795 Route 202, Doylestown, Pa 18902  
Apply using this link: <http://www.entrythingy.com/recommend=1187,2468>

=====

Artists of Yardley 5th Annual Juried Show, Deadline: February 20, 2016  
Artists of Yardley, Yardley, PA  
Go to this link to apply: <http://www.entrythingy.com/recommend=1187,2594>

=====

**Call for Artists!**

**DEADLINE: FEBRUARY 12, 2016 (Applications received after this date will be considered on a rolling basis)**

Located on Philadelphia's Main Line, [The Speer Gallery](#) at Shipley School displays professional exhibitions throughout the school year. Each exhibit is carefully selected and curated by The Shipley School's Fine Arts Committee. The goal of the Fine Arts Committee at Shipley is to seek out inspiring and unique artists from the Philadelphia region and beyond, showcasing a variety of artistic practices such as painting, photography, sculpture, and digital media. In so doing, the gallery exposes the community to a diverse visual pool and encourages appreciation and exploration of contemporary art. Exhibiting artists are encouraged to participate in the community by giving a talk and/or visiting art classes.

Currently, we are seeking submissions for shows beginning in Fall 2016 and beyond.

If you are interested in submitting your work to show at Speer Gallery at Shipley, please [APPLY HERE](#). For questions, please contact [SpeerGalleryatShipley@gmail.com](mailto:SpeerGalleryatShipley@gmail.com).

Speer Gallery at Shipley is free and open to the public, drawing upon the local community and beyond for attendance. The gallery, located at 814 Yarrow Street in Bryn Mawr, PA, is open Monday through Friday, from 8:30 am - 4:30 pm.

---

**Art Within Reach** announces the opening of our call for artists for our next show this May 13-14 in Collingswood, NJ. Back again at The Factory, that fun and funky venue that is a perfect place to show art.

Now entering the sixth year of our semi-annual events, Art Within Reach - Spring 2016 @ The Factory is seeking artists and fine craftspeople of all types to fill the 28 artist spaces. New artists are always welcomed, as are past participants and applicants, as we like to mix it up and curate a balanced mix of familiar and fresh, and offer a wide range to appeal to many senses of style.

Besides all the wonderful art, AWR also presents live music (acts to be announced), and the venue offers great food and beverage options with in-house businesses such as Revolution Coffee Roasters and The Square Meal.

Show Hours:

Friday, May 13, 6:00 p.m. to 10:00 p.m.

Saturday, May 14, 12:00 p.m. to 12:00 p.m.

**Application Deadline is Friday, February 26!**

Please follow the link for more details and application instructions. <http://bit.ly/22JKWa4>

=====

**Open Call to all Impressionist, Realist and Representational artists.**

**Gold Light 2nd Annual Open Juried Show**

March 5 to April 3, 2016

Gold Light Gallery, 30 West Bridge St., Suite #3, New Hope, PA 18938

**Deadline for entries is February 12th, midnight, online entries via Entrythingy.**

<http://www.murdochart.com/juried-show—2> for entry and information

=====

**Call for art:**

The Tulpehaking Nature Center is interested in art with trees as a subject matter for an exhibition around Arbor Day (April). If interested please contact the director, Kelly Rypkema at [krypikema@mercercounty.org](mailto:krypikema@mercercounty.org)

157 Westcott Ave. Trenton, NJ

=====

John James Audubon Center at Mill Grove and Valley Forge Audubon Society are proudly hosting their 10th annual Juried Art Show in April 2016. More than \$2,000 of award money will be granted in five different categories. The show will be held in Audubon PA at the first home in America of artist and naturalist John James Audubon. This site offers a unique perspective of how nature can inspire art.

The theme of this show is "Drawn From Nature." The shared mission of the John James Audubon Center and the Valley Forge Audubon Society is to inspire people to appreciate, preserve and protect birds, other wildlife, and their habitat; to promote personal appreciation and stewardship of the local natural environment through education and active participation in its preservation; and to preserve the artistic, scientific, and historic legacy of John James Audubon and celebrate the conservation movement he inspired. The theme of this art show follows from the above ideas. Images should in some way feature, with or without human presence, some aspect of birds, wildlife and/or nature; and/or the impact of birds, wildlife, nature, or man on a past, present or future environment.

If you have a Facebook page or a newsletter could you please include information about this show? If you would like hard copies of fliers and prospectus please contact [wchristie@audubon.org](mailto:wchristie@audubon.org).

See Prospects: <http://sketchclub.org/wp-content/uploads/2016/01/2016-Prospectus-for-Art-Show-8-5-by-11.pdf>